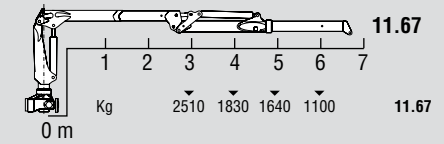
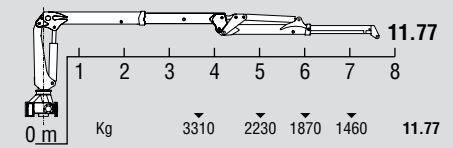




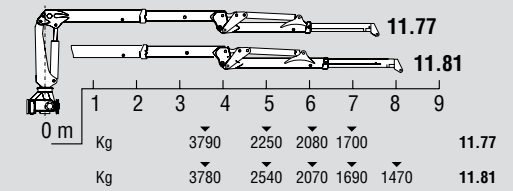
M 7000 R



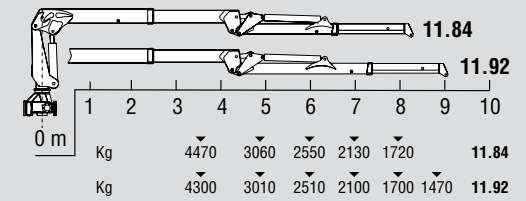
M 10000 R



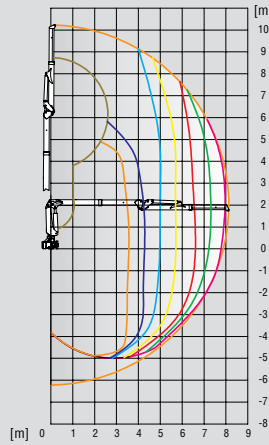
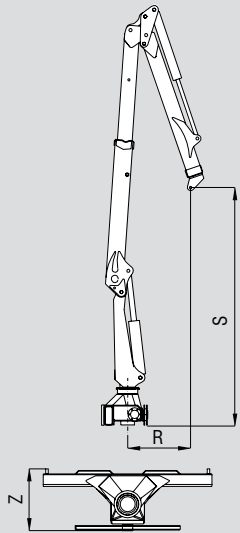
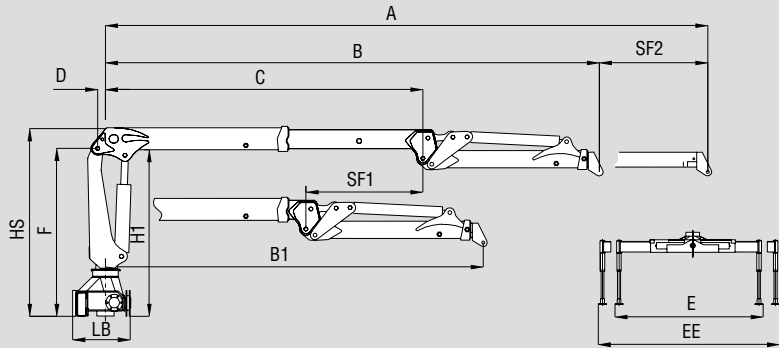
M 12000 R



M 14500 R



# Series R



	kNm	kNm	[°]	rpm	MPa	l/min	kg.	A	B	B1	C	SF1	SF2	D	E	EE	F	H1	HS	R	S	LB	Z
	mm	mm	mm	mm	mm	mm	mm	mm	mm	mm	mm	mm	mm	mm	mm	mm	mm	mm	mm	mm	mm	mm	mm
<b>M7000R</b>																							
<b>11.67</b>	75	18	430	5	220	50	1800	6750	5250	4250	2860	1000	1500	100	3360	---	1995	2000	2340	1000	2960	660	720
<b>M10000R</b>																							
<b>11.77</b>	115	22	435	5	240	80 2x70	2420	7700	6320	4820	4055	1500	1380	100	3780	---	2090	2070	2350	1120	4210	710	770
<b>M12000R</b>																							
<b>11.77</b>	132	25	435	5	250	80	2480	7700	6320	4820	4055	1500	1380	100	3780	4200	2045	2130	2400	1400	4080	730	790
<b>11.81</b>						2520	8100	6600	5100	4055	1500	1500	1540							3840			
<b>M14500R</b>																							
<b>11.84</b>	156	25	435	5	250	90	2980	8360	6860	5360	4305	1500	1500	150	3780	4200	2035	2100	2400	1300	3850	730	790
<b>11.92</b>	3130					9150	7340	5840	4305	1500	1810	1380	3390										

M 7000 R

M 10000 R

M 12000 R

M 14500 R